

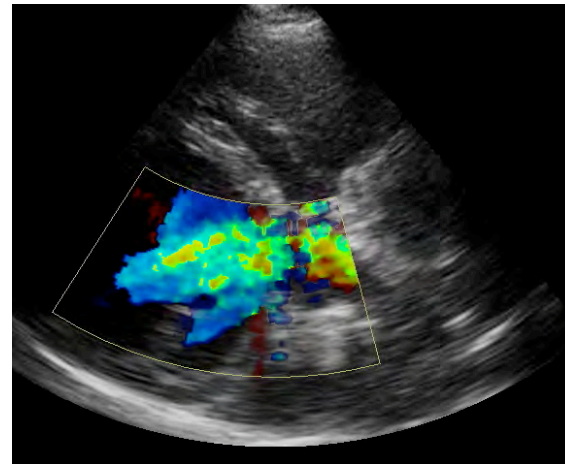
Ultrasound

Equipment:

- GE Logiq E
 - 8C micro-convex abdominal probe (4-11 MHz)
 - 12L Linear probe (5-13 MHz)
 - 3S Cardiac Sector probe (1.5-4 MHz)
 - Color, Spectral, Power and Continuous Wave Doppler

Applications:

- Abdominal ultrasound
- Echocardiography (heart ultrasound)
 - Diagnosis of valvular insufficiency
 - Quantification of flow (e.g. pulmonic stenosis)
 - Assessment of systolic and diastolic function
- Guided needle aspiration or biopsy



Indications:

- Abdomen
 - Abdominal mass
 - Abdominal pain
 - Vomiting/diarrhea
 - Anorexia
 - Hepatopathy
 - Should be performed in most cases of renal and post-renal azotemia
 - Abdominal effusion
 - Staging of cancer
 - Cushing's disease
 - Pancreatitis
 - Abnormal radiographs
- Heart
 - Murmur
 - Arrhythmia
 - Syncope
 - Heart failure
 - Unexplained effusion
 - Abnormal pulses
 - Screening for congenital defects
 - Suspected endocarditis
 - Abnormal radiographs

